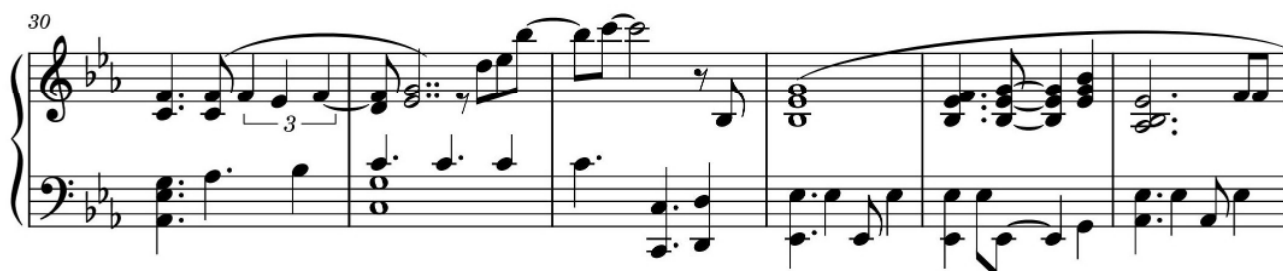
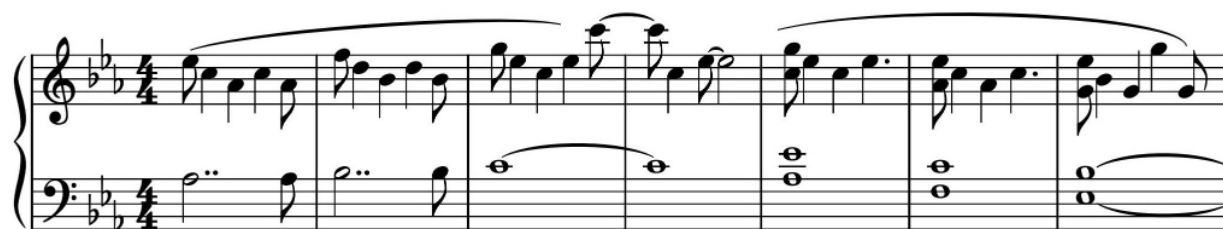


Love Them Away

piano cover



36

System 1, measures 36-40. The key signature has two flats (B-flat and E-flat). The melody in the right hand features a triplet of eighth notes in measures 36, 37, and 38, followed by a half note in measure 39 and a quarter note in measure 40. The bass line consists of a steady eighth-note accompaniment.

41

System 2, measures 41-45. The melody in the right hand continues with eighth notes and quarter notes, some beamed together. The bass line maintains the eighth-note accompaniment.

46

System 3, measures 46-50. The melody in the right hand includes a triplet of eighth notes in measure 46 and a half note in measure 47. The bass line continues with the eighth-note accompaniment.

51

System 4, measures 51-55. The melody in the right hand features a half note in measure 51, followed by eighth notes and quarter notes. The bass line continues with the eighth-note accompaniment.

56

System 5, measures 56-60. The melody in the right hand includes a half note in measure 56, followed by a triplet of eighth notes in measure 59. The bass line continues with the eighth-note accompaniment.

61

System 6, measures 61-65. The melody in the right hand features a triplet of eighth notes in measure 61 and a half note in measure 64. The bass line continues with the eighth-note accompaniment.

66

71

76

81

86

91

98

Measures 98-102 of a piano piece in B-flat major. The right hand features a melodic line with a triplet in measure 98, a half note in 99, and a half note in 100. Measures 101 and 102 contain chords. The left hand provides a steady accompaniment with eighth and quarter notes.

103

Measures 103-107. The right hand continues the melodic line with a triplet in measure 103, followed by eighth and quarter notes. Measure 107 ends with a half note. The left hand accompaniment remains consistent with eighth and quarter notes.

108

Measures 108-112. The right hand features a triplet in measure 108, followed by eighth and quarter notes. Measure 112 ends with a triplet. The left hand accompaniment continues with eighth and quarter notes.

113

Measures 113-117. The right hand features a triplet in measure 113, followed by eighth and quarter notes. Measure 117 ends with a half note. The left hand accompaniment continues with eighth and quarter notes.